

*From vision to  
implementation*

**CALIFORNIA BEHAVIORAL  
HEALTH POLICY FORUM**  

---

**SEPTEMBER 6-8, 2017**

# CALIFORNIA BEHAVIORAL HEALTH POLICY FORUM

---

## SEPTEMBER 6-8, 2017

*From vision to implementation*  
**MHSA Successes of Today and Innovations of Tomorrow**

Hilton San Diego – 1775 East Mission Bay Drive, San Diego, CA 92109

Welcome to San Diego!



Dear Colleagues,

Welcome to the 2017 California Behavioral Health Policy Forum! Never has there been greater interest in behavioral health care than there is today. Our community partners, including courts, law enforcement, schools, and hospitals, are increasingly requesting partnership from behavioral health providers, families, and consumers to meet local needs.


Behavioral health champions at this event, and those who came before us, have achieved hard-won changes to behavioral health in California over the past twenty years. The public's views of people with mental health and substance use disorders are becoming more supportive, behavioral health is today an essential health insurance benefit, and financial resources have been provided for new grant programs and initiatives.

Major historical progress and local partnerships: As you participate in this dynamic Behavioral Health Policy Forum program we have designed for you, we think you will see both these themes emerge. From programs to help youth cope and be resilient in the face of unimaginable trauma, to models for genuine involvement and employment of behavioral health consumers, we hope this event helps us collectively take stock of the great efforts happening every day in California's community behavioral health system.

We expect to be inspired by what we all learn and who we meet this week. The inspiration that comes from gathering with like-minded individuals reenergizes us and helps us see that we are not alone in our commitment to the cause of improved behavioral health for Californians. We will be inviting you to bring your energy and passion to an exciting effort we are launching, "CBHDA's Behavioral Health 2020 Initiative." Let's use what we learn this week and what we have accomplished over the past decade to plan the future of community behavioral health in California.

Thank you for joining us at California's 2017 Behavioral Health Policy Forum.

  
Kirsten Barlow  
Executive Director  
CBHDA

  
Suzanne Tavano  
President  
CBHDA

## Wednesday, September 6, 2017

12:00 – 6:00 **Early Registration**  
*Foyer*

1:00 – 2:30 **Trilogy Network of Care Demonstration by Trilogy Integrated Resources**  
*Riviera*

The Network of Care for behavioral health community outreach is well established in California where it first was developed in partnership with CBHDA, and now has spread throughout the country. These customized local web portals provide faster, easier access to comprehensive community services, medical information, advocacy, news, support, personal health records and much more. The session will go over the newest enhancements and functionality now available which include: Prisoner Reentry, Veterans advances, Online Advance Behavioral Health Care Directives, information/referral, client tracking and more.

**Bruce Bronzan**, *President*  
**Eric Butler**, *Vice President of Business Development*

### **Crisis Services: Expanding California's Continuum**

1:00 – 2:30 **Crisis Capacity for Youth**  
*St. Tropez*

**James Harte**, *PhD, Program Manager, Children and Youth Behavioral Health, Orange County*

**Andre Bossieux**, *MHA, Program Manager II, One Stop TAY Center, San Bernardino County Behavioral Health*

**Andrew Gruchy**, *LCSW, Deputy Director, Adult and Juvenile Forensics Division and Substance Use Disorder Services, San Bernardino County Behavioral Health*

2:40 – 3:40 **Crisis Residential: The key element of an effective behavioral health crisis response system**  
*St. Tropez*

The presentation will focus on the process of developing and implementing a Crisis Residential Treatment program as an effective alternative to inpatient treatment for individuals in an acute crisis. Included will be research on the effectiveness of CRT, program design, and clinical policies and practices of CRT services as a part of a crisis response capability. Mr. Fields will present strategies for addressing community opposition to programs, as well as the sources of funding for this level of care.

**Steve Fields**, *MPA, Executive Director, Progress Foundation*

### **CBHDA Committee Meetings**

*(for CBHDA Members and Invited Guests)*

1:00 – 4:50 **Cultural Competency, Equity and Social Justice Committee (CCESJC)**  
*Las Palmas*

2:40 – 3:40 **Medical Services System of Care Committee (MSSOC)**  
*Riviera*

2:40 – 3:40 **Substance Abuse Prevention Treatment Committee (SAPT)**  
*Monte Carlo*

3:30 – 5:30 **CIBHS Leadership Institute Meet and Greet - Sponsored by USC**  
*Marbella*

Alumni of the Institute and those interested in applying to participate in the CIBHS Leadership Institute are invited to attend this networking reception. Learn more about upcoming Leadership classes.

### **CBHDA Governing Board Awards Dinner**

*(Separate registration required, all Conference attendees may register)*

6:00 - 10:00 **CBHDA Governing Board Awards Dinner**  
*Monte Carlo/St. Tropez*

**Emcee: Rob Stewart**,  
*Emmy winner and PBS TV Host*

## Thursday, September 7, 2017

7:15 – 4:30 **Registration**  
*Foyer*

7:15 – 8:15 **Continental Breakfast** *(included with registration) Sponsored by Trilogy Integrated Resources*  
*Pavilion*

8:15 – 8:30 **Welcome and Introductions**  
*Pavilion*

**Suzanne Tavano**, *PhD, RN, CBHDA President and Behavioral Health Director, Marin County*

**Kristin Gaspar**, *Supervisor – Third District San Diego County*

**Kirsten Barlow**, *MSW, Executive Director, County Behavioral Health Directors Association of CA (CBHDA)*

8:30 – 9:30 **Keynote: The Science Behind Behavioral Health**  
*Pavilion*

**Danielle Schlosser**, *PhD, Lead Clinical Scientist, Mental Health Team, Verily*

Behavioral health is founded in the science of the brain. It effects how we think, feel, act, handle stress, relate to others, and make choices. This general session will be discussing the brain science associated with behavioral health and what the future holds for care and treatment.

9:30 – 9:40 **Networking Break**

**Screening of Directing Change Suicide Prevention Films**  
*Pavilion*

9:40 - 10:40 **Session 1A: Nothing About Us Without Us**  
*St. Tropez*

This panel of consumers, family members and advocates will discuss positive system changes, policies surrounding co-occurring disorders, strengthening peer networks and opportunities for further professionalizing peer providers.

**Judi Holder**, *Recovery Services Administrator, Recovery Innovations of California*

**Robert Labelle**, *Peer Liaison, RI International*

**Anita Fisher**, *Education Director, NAMI San Diego*

9:40 - 10:40 **Session 1B: Future of the Affordable Care Act**  
*Monte Carlo/ Riviera*

The Affordable Care Act provides one of the largest expansions of mental health and substance use disorder coverage in a generation. New leadership in Washington D.C., renewal of the next California Medicaid 2020 Waiver and state plan amendments, and a new Governor prove there is much more to be done.

**Karen Baylor**, *PhD, LMFT, Deputy Director, Mental Health and Substance Use Disorder Services, Department of Health Care Services*

**MaryBeth Musumeci**, *JD, Associate Director, Kaiser Family Foundation*

**Deborah Kelch**, *Executive Director, Insure the Uninsured Project*

**George Scolari**, *Behavioral Health Program Manager, Community Health Group*

10:40 – 11:10 **Networking Break**

**Screening of Each Mind Matters – Personal Stories of Hope**  
*Pavilion*



**11:10 – 12:10 Session 2A: Housing Insecurity**  
**St. Tropez**

Housing insecurity is an issue that affects many Californians living with mental illness and substance use disorders. This panel will be discussing innovative community solutions to housing insecurity for youth and adults with behavioral health needs.

**Alfredo Aguirre, LCSW, Behavioral Health Director, San Diego County Health and Human Services**

**Simonne Ruff, Director, Corporation for Supportive Housing**

**Jessica Russell, Peer Counselor, Home Start Maternity Shelter Program**

**11:10 – 12:10 Session 2B: Youth Trauma**  
**Monte Carlo/Riviera**

Experts in this session will focus on issues and effective solutions for addressing the trauma that too many of our youth in California experience.

**Terry Rooney, PhD, Director Colusa County Behavioral Health**

**Ashley Flores, Board Member, California Youth Empowerment Network (CAYEN)**

**Frank Mecca, Executive Director, County Welfare Directors Association of California (CWDA)**

**Jeffrey Rowe, MD, Supervising Psychiatrist, Juvenile Forensic Services, County of San Diego Behavioral Health Services**

**12:10 – 1:10 Lunch (included with registration)**  
*Sponsored by Kaiser Permanente*  
**Bayside Terrace**

**1:15 – 2:10 Entertainment**  
**Pavilion**

**Performance by Urban Beats/Noble Works**

**Screening of films for and by Diverse Communities** (Every Mind Matters vignettes and Directing Change CA films)

**2:20 – 3:20 Session 3A: Measuring the Impact of the Mental Health Services Act**  
**St. Tropez**

This panel will highlight the efforts of state and county agencies to measure the impact of MHSA-funded programs on the individuals, families, and communities that have been served. Included will be a discussion of strategies to measure the impacts of prevention and early intervention.

**Brian R. Sala, PhD, Deputy Director for Evaluation and Program Operations, Mental Health Services Oversight and Accountability Commission**

**Brenda Grealish, Assistant Deputy Director, Mental Health and Substance Use Disorder Services, Department of Health Care Services**

**Jane Adcock, Executive Officer, California Mental Health Planning Council**

**Dan Peck, Director, Third Sector Capital Partners**

**Sharon Ishikawa, PhD, MHSA Coordinator, Orange County Health Care Agency**

**2:20 – 3:20 Session 3B: Strengthening Partnerships to Benefit Children, Youth and Young Adults**  
**Monte Carlo/Riviera**

This panel will focus on children's behavioral health issues and solutions. Discussions will include local and state-level opportunities to improve our effectiveness in serving children and youth with behavioral health needs early in their lives.

**Michael Kennedy, LMFT, Behavioral Health Director, Sonoma County Department of Health Services**

**Marty Giffin, PhD, Executive Director, California Mental Health Advocates for Children and Youth (CMHACY)**

**Dawn M. Smith, LCSW, Administrative Manager II, Children, Youth, and Prevention, Behavioral Health Services, County of Orange Health Care Agency**

**Stephanie Welch, MSW, Executive Officer, Council on Mentally Ill Offenders (COMIO)**

**3:20 – 3:30 Networking Break**

**Screening of Directing Change Mental Health Matters films**  
**Pavilion**

**3:30 – 4:30 Session 4A: Legislative Strategies for 2018**  
**St. Tropez**

This panel will discuss major legislative and policy trends that the behavioral health community can expect to see in 2018 and opportunities to influence the state legislature next session.

**Mary Adèr, MPP, MHP, Deputy Director, Legislative Affairs, County Behavioral Health Director Association of CA**

**Gail Gronert, Special Assistant to the Speaker, Assembly Speaker Anthony Rendon's Office**

**Kiran Savage-Sangwan, Health Integration Policy Director, California Pan-Ethnic Health Network**

**Paul Curtis, Executive Director, California Council of Community Behavioral Health Agencies (CCCBHA)**

**3:30 – 4:30 Session 4B: Innovation through the Mental Health Services Act (MHSA)**  
**Monte Carlo/Riviera**

With more than a decade of learning behind us, this panel will be discussing successes in MHSA Innovation programs and how communities are crafting innovative solutions that reflect the voters' intent in passing Proposition 63 in 2004.

**Jonathan Sherin, MD, PhD, Mental Health Director, Los Angeles County, Department of Mental Health**

**Daphne Watson, Executive Director, Mental Health America in San Diego**

**Lara Gregorio, LCSW, Director of Clinical Initiatives, 7 Cups**

**4:30 Adjourn**

**Screening of films from College Students**  
**Pavilion**

**4:30 – 6:00 Special Reception – Sponsored by CIBHS**  
**Bayside Terrace**

Join us in recognizing Dr. Sandra Naylor Goodwin as she prepares to retire after 45 years of an EXTRAORDINARY career of service to the behavioral health community. Dr. Naylor Goodwin will be retiring from the California Institute for Behavioral Health Solutions (CIBHS), for which she has served as its CEO since its founding in 1993.



## Friday, September 8, 2017

Friday morning will be a combined session with the CBHDA and the National Association of Rural Mental Health.

**8:00 – 11:30 Registration**  
*Pavilion*

**8:00 – 9:00 Continental Breakfast**  
*(included with registration)*  
*Pavilion*

**9:00 – 9:10 Welcome**

**Suzanne Tavano, PhD, RN, CBHDA President and Behavioral Health Director, Marin County Behavioral Health and Recovery Services**

**Dennis Mohatt, MA, Conference Chair and Board Member, National Association of Rural Mental Health**

**9:10 – 10:10 Where Rural Health Stands in the Current Washington Healthcare Debates: The Challenges and Opportunities Ahead**

Alan Morgan will discuss insights on the federal scene and impacts emerging for rural health and behavioral health.

**Alan Morgan, MPA, Chief Executive Officer, National Rural Health Association**

**10:10 – 10:20 Networking Break**

**10:20 – 11:30 The Affordable Care Act: National Perspective**  
*Pavilion*

A panel dialogue about the federal landscape relating to rural health and behavioral health and how it is playing out through the lens of rural communities.

**Moderator - Ron Manderscheid, Executive Director, National Association of Rural Mental Health**

**Wayne Lindstrom, Director of New Mexico Behavioral Health Services Division and CEO of the New Mexico BH Collaborative**

**Noel J. O'Neill, LMFT, Director, Trinity County Behavioral Health**

**Nick Macchione, Director and Deputy Chief Administrative Officer, County of San Diego, Health and Human Services Agency**

**11:30 Adjourn**

The National Association for Rural Mental Health will be holding its meetings concurrent to this Policy Forum. For more information and to see an agenda, please go to: [www.narmh.org](http://www.narmh.org)

One of the primary challenges in mental health is the lack of an objective, precise and comprehensive measurement system. We believe technology will play a critical role in this area with the untapped potential of digital measurement to enable earlier diagnosis and intervention.

- Danielle Schlosser, Verily



## Speaker Bios

### Jane Adcock, Executive Officer

California Mental Health Planning Council

Jane Adcock has worked in the public sector for over 30 years. She began her service at the county level and moved to state-level service in 1987. Jane has worked in public mental health since 2000 and has been an integral part of the state-level policy development for the implementation of the Mental Health Services Act (MHSA) since its passage. Jane has extensive experience with public policy analysis and program development in both mental health and social services. She currently serves as the Executive Officer at the California Mental Health Planning Council where she continues her advocacy efforts for accessible, effective and appropriate behavioral health care. Jane has a Bachelor of Arts Degree in Spanish language and culture and a Master of Arts Degree in Clinical Psychology.

### Mary Adèr, MPP, MHP, Deputy Director, Legislative Affairs

County Behavioral Health Director Association of CA

Mary Adèr has been the Deputy Director, Legislative Affairs at CBHDA since the spring of 2016. Prior to CBHDA she served as Senior Advisor for Government Relations at Kaiser Permanente's national headquarters in Oakland, California. For five years, she provided substantive and strategic guidance on legislation in California, Hawaii, and Georgia. Prior to joining Kaiser Permanente, Mary served for ten years as senior staff to California legislative leadership at the Assembly Appropriations Committee and the non-partisan Legislative Analyst's Office. Mary's areas of expertise include legislative analysis and writing, assessment of impacts of legislation and public finance. Mary holds a Master of Public Health and a Master of Public Policy from the University of California at Berkeley and a Bachelor of Arts in Psychology from Dartmouth College.



### Alfredo Aguirre, LCSW, Behavioral Health Director

San Diego County Health and Human Services

Alfredo Aguirre, LCSW, is the Director of Behavioral Health Services of San Diego County and has served in the capacity of Mental Health Director since 1999. He serves on the Board of Directors of the National Network of Social Work Managers (NSWM), is a member of the California Behavioral Health Directors Association (CBHDA) and is the Co-Chair of the Cultural Competence, Equity, and Social Justice Committee of the CBHDA. Mr. Aguirre also serves on the Board of the California Institute of Behavioral Health Solutions and on the Child, Adolescent and Family Branch Council, a national advisory committee to the Children's Branch of the Center for Mental Health Services under Substance Abuse Mental Health Services Administration (SAMHSA). In 2017 he was appointed by Governor Brown to serve on the No Place Like Home Advisory Committee.



Mr. Aguirre has worked in the mental health field for over 37 years as a psychiatric social worker, staff supervisor, manager, and executive. He is the recipient of many prestigious awards, including Mental Health Person of the Year in 2008, the 2011 Hope Award for his leadership in the County of San Diego's Mental Health Stigma Reduction Media Campaign, "It's Up to Us," and the 2014 NAMI California Outstanding Mental Health Director.

Alfredo received his Master's Degree in Social Welfare in 1978 from the University of California at Berkeley, and he has a special interest in cultural competence development in systems and communities. He authored an article, "Community Mental Health Services in a Managed Care Environment: 10 Key Issues in Promoting Cultural Competence," published in Promoting Cultural Competence in Children's Mental Health Services (Mario Hernandez and Mareasa R. Issacs, eds.) in 1999.

### Kirsten Barlow, MSW, Executive Director

County Behavioral Health Directors Association of CA

Kirsten Barlow, Executive Director of the County Behavioral Health Directors Association (CBHDA) of California since 2015, serves as the key management leader of CBHDA. She oversees all aspects of the organization's operations, budget, advocacy activities, and strategic plan. She works with the association Board and directs the work of staff to ensure the organization's mission is fulfilled. She serves as the organization's primary spokesperson to the Administration, Legislature, stakeholders, the media, and the general public.



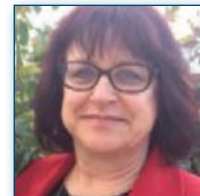
Ms. Barlow served as Executive Officer of the Council on Mentally Ill Offenders in 2014-15, a position to which she was appointed by Governor Edmund G. Brown, Jr. The Council on Mentally Ill Offenders develops strategies for keeping youth and adults with mental illness out of the criminal justice system.

Between 2009 and 2014, Kirsten was Associate Director at CBHDA, where she directed the Association's legislative and budget advocacy efforts. Prior positions included serving as public information officer at the California Department of Mental Health, legislative advocate and information officer for the Los Angeles County Department of Mental Health, and Principal Consultant to the California State Assembly Committee on Human Services under the leadership of former Assemblywoman Dion Aroner (D-Berkeley). Kirsten earned her Masters of Social Welfare degree in management and planning from the University of California - Berkeley and her Bachelors' degree in psychology from the University of Michigan - Ann Arbor. Kirsten and her husband Ian live in Sacramento, CA, where they are raising their two sons, Myles and Bennett.

### Karen Baylor, PhD, LMFT, Deputy Director, Mental Health & Substance Use Disorder Services

California Department of Health Care Services

Karen Baylor was appointed as the Deputy Director of Mental Health and Substance Use Disorders for the Department of Health Care Services on June 12, 2013. She previously was the Behavioral Health Administrator for the County of San Luis Obispo for eight years. During her time in San Luis Obispo County, she served as President of the California Mental Health Directors Association during 2012. Her previous work experience was in management at a variety of private, non-profits organizations providing children's mental health services. She has a Ph.D. in Clinical Psychology and is a Licensed Marriage and Family Therapist.



### Andre Bossieux, MHA, Program Manager II

One Stop TAY Center, San Bernardino County

Andre Bossieux was born and raised in Pasadena California. He attended the University of Laverne and received a Bachelor's of Arts Degree in Television & Radio Communications. While attending ULV for undergraduate studies He participated on the basketball team receiving "All Conference" honors all 4 years. His accomplishments on the basketball court granted him the prestigious honor of being inducted into the University of LaVerne Athletic Hall of Fame November 2011. After his undergrad studies Andre continued his path of higher education when he decided to pursue his Master's Degree in Health Care Administration. During Andre's 10-year tenure working with the San Bernardino County's Transition Age youth (TAY) Program, over 3,500 TAY consumers are being served throughout the county system of care annually to youth that are experiencing significant mental health challenges and homeless. The San Bernardino TAY programs has been recognized nationally and continues to be a major link in providing critical services to assist the youth needs in our communities! The fulfillment I get when we are successful in helping youth accomplish their goals is what motivates me to labor in this profession!



### Bruce Bronzan, President

Trilogy Integrated Resources

Bruce Bronzan has a long and exceptional career in the health and social-service arena. He was a county mental-health program director, and then served as a county supervisor for eight years as the lead for all health and human-services programs. He was a member of the California State Legislature for 10 years and chairman of the Health Committee and the Select Committee on Mental Health. Mr. Bronzan authored more than 100 major pieces of legislation, including the first "parity" bill in the nation, along with major efforts in aging and long-term care, health, mental health, disabilities and kids at risk. Mr. Bronzan was honored numerous times for his work in health and social services, including receiving the first Jacob Javits Award in New York for advancing the cause of mental health.



### Paul Curtis, Executive Director

California Council of Community Behavioral Health Agencies (CCCBHA)

Paul Curtis is a longtime activist who is Executive Director of the California Council of Community Behavioral Health Agencies (CCCBHA). CCCBHA is a statewide association of non-profit community agencies serving the behavioral health community and is dedicated to the proposition that the people of California deserve a rational, comprehensive, community-based behavioral health system that is adequately funded to serve all those in need of services. We are their voice at the Capitol and with state agencies, and work to ensure that state and county programs support integrated services for children, youth, adults and the elderly which includes physical health, behavioral health, housing, social services, education, substance abuse services and vocational rehabilitation. Prior to CCCBHA Paul was the Executive Director of the California Coalition for Youth. Paul has over thirty years of experience working in both the for-profit and non-profit world and was involved in the HIV/AIDS and LGBTQ communities for many years. He has an extensive background in developing collaborative community programs, public policy and advocacy efforts and building strong relationships across non-profit, for-profit and government sectors. Paul is dedicated to fighting for the needs of those who have no voice or are underserved. He serves on numerous boards, task forces and councils at the local, state and national level.



### Steve Fields, MPA, Executive Director

Progress Foundation

Steve Fields, MPA, has served as the Executive Director of Progress Foundation, a non-profit mental health agency since 1969. Progress Foundation provides a range of residential treatment services as alternatives to institutional care for persons with severe mental disabilities in San Francisco, Sonoma and Napa counties in California. Mr. Fields has been involved in the development of social rehabilitation programs for over 40 years. Progress Foundation pioneered the development of acute residential alternatives to hospitalization, and opened the first social model residential treatment programs for geriatric clients in the country and the first social model residential treatment program for women and their children. Under the leadership of the Executive Director, Progress Foundation has also taken a lead role in developing supported housing for persons with disabilities.

In 2009, the agency developed a community-based psychiatric emergency clinic to provide an alternative to involuntary assessments in hospital psychiatric emergency rooms. The Dore Urgent Care Clinic operates 24-hours, 7 days a week and is attached to an acute diversion residential treatment program which serves as an alternative to hospitalization.



### Anita Fisher, Director of Education

NAMI San Diego

As Director of Education at NAMI San Diego, Anita's responsibilities include managing the coordination of the Family and Peer Recovery education, Support Groups, and training for Peer and Family Specialist working and volunteering in the Behavioral Health Field throughout San Diego County. Anita is also a Program Manager for Peer and Family Specialists employed in Behavioral Health contracted Peer and Family Engagement programs.



Prior to accepting her current position at NAMI San Diego in November 2007, Anita enjoyed a successful 30-year career in Banking Operations and Administration, where she held positions in supervision, management, and project management. Her last position was at Union Bank of California as Vice President and Business Systems Analyst.

Anita's oldest son was diagnosed with a mental health diagnosis as an adult sixteen years ago. Fourteen years ago she and her husband took the NAMI Family-to-Family education class. This class was so valuable and inspirational in teaching them about their son's illness, Anita decided to dedicate herself to NAMI San Diego's mission of education, support and advocacy for everyone affected by mental illness.

Anita is a passionate advocate for issues surrounding criminal justice and mental illness. She was awarded the 2012 NAMI California Outstanding Criminal Justice Advocate Award. In 2013 Anita was recognized by the San Diego Section of National Council of Negro Women Community Service "Unsung Hero" awardee.

Anita has presented workshops at NAMI National and State Conferences, Justice Involved Conferences, National Caregiver Association, on topics from peer and family mental health education to Career Pathway's for Peers and Family Members in Behavioral Health.

### Ashley Flores, Program Coordinator

Project Peer Support Network (PRPSN)

As a Program Coordinator for Project Return Peer Support Network (PRPSN) and a board member of the California Youth Empowerment Network, Ashley has been a passionate, proactive mental health advocate and continues to support the increase of stigma reduction efforts, early education, social inclusion and the representation of stakeholders in legislative processes that affect their lives, throughout the state. This is accomplished through her everyday work and the varying recovery based and empowerment trainings she presents to youth and adult mental health service providers and recipients.

### Kristin Gaspar, County Supervisor

San Diego County Third District

Supervisor Kristin Gaspar is the newest member of the Board and is currently the Vice Chairwoman. She was elected in November of 2016 becoming the first person to beat a Board incumbent in 32 years. Gaspar is the youngest woman ever elected to the Board. She comes to the office as the first directly elected Mayor of Encinitas as well as former City Council Member. The Supervisor was born and raised in North County and is proud to represent her hometown community.



She lives in Encinitas with her husband and three children. Supervisor Gaspar's third district stretches from the coast to the inland valleys of Escondido, representing more than 600,000 people.

Before being elected Supervisor, Gaspar was CFO of the physical therapy company she and her husband, Paul, started from the ground up in 2002. That business has now grown to seven offices and employs 140 employees. She is very involved in her children's schools and she enjoys coaching the La Costa Canyon Pop Warner Cheerleading Squad. The Supervisor is active in her Rotary Club and loves volunteering to help the elderly and those with Alzheimer's and related dementia.

**Richard Gengler, CEO**  
Prevail Health

Richard grew up in Madison Wisconsin and graduated with honors from the University of Minnesota, Carlson School of Management, with a degree in Accounting. Following college, he joined the US Navy flight program and was designated a Naval Aviator and selected to fly the F/A 18 Hornet. Over his nine and a half years of service, Richard participated extensively in various assignments in support of the Global War on Terror, many in leadership positions. During his two aircraft carrier tours, he flew numerous combat missions as part of Operation Iraqi Freedom and earned an Air Medal for his distinguished service.



Richard left the Navy as a Lieutenant Commander and enrolled in the MBA program at the University of Chicago, Booth School of Business. While earning his degree with a concentration in Entrepreneurship, he founded Prevail Health Solutions with the goal of helping address the surge in military mental health issues that have accompanied the Global War on Terror.

Prevail Health Solutions core technology was built in partnership with the National Science Foundation, and Prevail worked under a series of grants to build, test and deliver the Vets Prevail program, a scalable online program that uses technology to deliver evidence-based mental health in a cost effective way. Today, Vets Prevail is delivered nationally in partnership with the VA, and touches 15,000-20,000 veterans monthly. The flexible model also has direct and practical application in the civilian mental health space through Prevail's iPrevail program, where the issues of reluctance to seek care and low accessibility generate enormous social costs. Through the this program, Prevail reaches tens of thousands of individuals across diverse populations each and every month.

Richard lives in Chicago with his wife Carrie, daughter Autumn and son Ethan, and is a lifetime member of the Martin Baker Ejection Tie Club.

**Marty Giffin, PhD, Executive Director**

California Mental Health Advocates for Children and Youth

Marty Giffin, with a M.S. in Education, taught school from 1972 through 1977. He received his Ph.D. in Clinical Psychology in 1982 and holds an active license in the State of California. Dr. Giffin (Marty) has worked in the mental health field for over thirty-five years. Over these years he has served in the role of clinician, supervisor, administrator, executive administrator and, since the mid 80's, a leader of the development of the Children's System of Care at the county, state and federal levels. Some of these roles include: the Children's Coordinator over Children Services for San Mateo County; the Principal Investigator for the first federal grant (Substance Abuse and Mental Health Administration – SAMHA) awarded to California overseeing the enhancement of Children's System of Care in a collaborative made up of five California counties; the COO for a 72 bed residential center for children and youth in San Diego; Senior Vice President over all Southern California operations (20 facilities) for a large statewide non-profit serving Seriously and Pervasively Mentally Ill adults as well as Intellectually Delayed youth and adults. Marty has also served as the board president for the California Mental Health Advocates for Children and Youth (CMHACY) for 18 years, as well as the board president for a consumer driven organization, the Family and Youth Round Table for 15 years. Currently Marty is serving as the Executive Director for CMHACY. Marty also has lived experience as his adult daughter was born with Cerebral Palsy and is challenged with significant mental health issues.



**Brenda Grealish, Assistant Deputy Director, Mental Health and Substance Use Disorder Services**

California Department of Health Care Services

Brenda Grealish was appointed Assistant Deputy Director for Mental Health and Substance Use Disorder Services within the California Department of Health Care Services in November 2014. As Assistant Deputy Director, Ms. Grealish is responsible for assisting the Deputy Director with the work under all the mental health and substance use

disorder divisions. Ms. Grealish began her state career with the Office of Statewide Health Planning and Development. She then worked at the Department of Mental Health for almost ten years in increasingly responsible positions. She has four years of management experience with the Department of Corrections and Rehabilitation during which she advanced from a Research Manager II to a Research Manager III, then to Deputy Director (Exempt) position within a less than three-year period. Prior to her appointment as Assistant Deputy Director, Ms. Grealish was the Chief, Mental Health Services Division. Ms. Grealish has a Bachelor's and Master's Degree in Psychology.

**Gail Gronert, Special Assistant to Speaker Anthony Rendon**

Gail Gronert is Special Assistant to Speaker Anthony Rendon, staffing the area of Human Services policy. Ms. Gronert has staffed both policy and budget issues relating to human services and safety net programs for the last 16 years, with a nearly 3-year hiatus staffing Los Angeles County Department of Public Social Services from 1998 to 2000. Los Angeles County represents about 35% of the low-income population in California participating in the State's safety net programs. She returned to the Assembly Speaker's Office of Policy in 2000, working on issues including the successful enactment of AB 12/After 18 program to support foster youth ages 18 to 21, implementing the federal Fostering Connections Act in California. Ms. Gronert grew up in Minnesota and graduated from Stanford University completing a dual major in English and French. She also graduated from the University of California, Davis, King Hall School of Law, entering the California Bar in 1995.



**James Harte, PhD, Program Manager**

Children and Youth Behavioral Health, Orange County

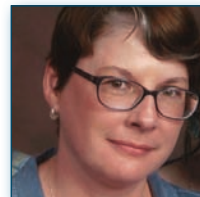
Dr. Harte has been with Orange County's Children and Youth Behavioral Health (CYBH) for over twenty years. During this time, he has supervised the mental health services for a large group home, services to the youth supervised by the Juvenile Court and has been involved in the planning and development of all the County's MHSA programs for children and TAY. He coordinates inpatient and crisis services for CYBH for those under 18. He also oversees several innovative contracts including a unique partnership with a local children's hospital to address the behavioral health needs of SED children and their families where the youth has an acute or chronic illness that is impairing all phases of family life.

Before coming to the County of Orange, he served in the United States Navy as a clinical psychologist, worked as a school psychologist in a K-12 district and was clinical services director for a large residential treatment program which was Joint Commission accredited. His PhD in clinical psychology is from Alliant International University. He is a licensed psychologist in California and holds a lifetime credential as a School Psychologist.

**Judi Holder, CPRP, Recovery Services Administrator**

RI International

Judi Holder is the Recovery Services Administrator for the RI International, San Diego programs. Judi has been a contributing team member of RI International for over 15 years. She is a Certified Advanced Level WRAP Facilitator, a Certified Peer Employment Training Instructor and the author of the Wellness and Empowerment in Life and Living (WELL) 4th edition. This curriculum is a 15-session program developed to assist individuals in enhancing their daily living and wellness skills. She is also the co-author of Creating Healthy Habits, a five session program to help people develop the skills and tools for healthy lifestyle choices. Judi has openly shared about her own personal journey through mental health challenges and recovery with people throughout the country.



**Sharon Ishikawa, PhD, MHSA Coordinator**

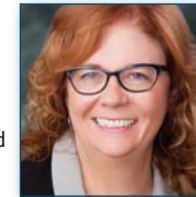
Orange County Health Care Agency

Dr. Ishikawa has 25 years of training and experience in research design and data analysis, including spending 2 ½ years as a Research Analyst for Community Services and Supports MHSA programs in Orange County. She has most recently worked with other OC HCA managers and researchers to standardize outcome measures, data analytics and data visualization across Behavioral Health Services. Dr. Ishikawa obtained her Ph.D. in Clinical Psychology from UCLA, completed research post-doctoral fellowships at the University of Southern California and the University of California Irvine, and served as an Assistant/Associate Project Scientist at the University of California Irvine. In these roles, she conducted several large-scale, community-based research projects with vulnerable populations; trained in psychological assessment with child and adult in- and out-patient populations; taught several courses in psychological assessment, research methods, and statistics; and has published several book chapters and peer-reviewed journal articles.

**Deborah Kelch, Executive Director**

Insure the Uninsured Project

Deborah Reidy Kelch is the Executive Director of the Insure the Uninsured Project (ITUP). ITUP is a nonpartisan, nonprofit health policy institute that advances creative and workable policy solutions to expand health care access and improve the health of Californians. Prior to coming to ITUP, Deborah had 30+ years of experience analyzing and working to improve health care in California, including 15 years as policy and fiscal staff to the California Legislature and more than 15 years as owner of Kelch Associates, an independent health policy consulting firm. Deborah received her master's degree in public policy and administration from CSU Sacramento and her bachelor's degree in political science from UCLA.



**Michael Kennedy, LMFT, Behavioral Health Director**

Sonoma County Department of Health Services

Originally from New York, Mike worked in San Francisco for 23 years: Ten years at the Edgewood Children's Residential Center working with children ages 5-12; and 13 years at the Larkin Street Youth Center, developing and managing services for homeless and transitional age youth. He came to Sonoma County Mental Health in 2001.

During his tenure in Sonoma County Mike has functioned as the Section Manager for Forensic and Special Programs, as the Liaison to the State for the Mental Health Services Act, provided supervision for Youth and Family and now as Behavioral Health Services Director oversees both Mental Health and Substance Use Disorder Services.

Mike sits on the CBHDA Executive Committee as the Substance Use Disorder Representative and is the Co-Chair of the CBHDA Mental Health Services Act Committee.

**Wayne Lindstrom, Director, CEO**

Behavioral Health Collaborative for the State of New Mexico

Wayne Lindstrom serves as the Director of BHSD and the CEO of the BH Collaborative for the State of New Mexico. His last position was the president and CEO of Mental Health America (MHA). Wayne has 46 years of behavioral health experience and his doctoral degree is from Case Western Reserve University and his MSW from the University of Pittsburgh. Before joining Mental Health America, he was the CEO of a children's behavioral health provider organization in Ohio and managed a national organizational development consulting practice. His organizational clients included public authorities, service providers, health systems, pharma, and private companies. In the 1980's he directed addiction services for the State of Ohio and subsequently held a variety of leadership positions in managed behavioral health care. He went on to function nationally as the Director of Public Sector Operations for United Behavioral Health (UBH) which included overseeing the implementation of public sector contracts. His career began in the 1970's when he served in the United States Air

Force where he implemented and managed a drug treatment program during the Vietnam War. He has worked in community mental health settings, hospitals, emergency departments, corporate environments, and private practice while also teaching at the undergraduate and graduate levels.

**Nick Macchione, Director and Deputy Chief Administrative Officer**

County of San Diego, Health and Human Services Agency

Nick Macchione has 30 years' experience in the delivery, management and public policy of health and human services, Nick serves as San Diego County's Director of the Health and Human Services Agency. He directs a professional workforce of 6,200 employees with a \$2+ billion annual operating budget, including 166 citizen advisory boards/commissions and 1,000 contracted community service providers. Under his leadership, the Agency has earned state and national recognition for its innovative, cost effective solutions in improving the health, safety and well-being for its one million clients.



**Ron Manderscheid, PhD, Executive Director**

National Association of County Behavioral Health and Developmental Disability Directors & National Association for Rural Mental Health

Ron Manderscheid, Ph.D., serves as the Executive Director of the National Association of County Behavioral Health and Developmental Disability Directors. The Association represents county and local authorities in Washington, D.C., and provides a national program of technical assistance and support. Concurrently, he is Executive Director of the National Association for Rural Mental Health, Adjunct Professor at the Department of Mental Health, Bloomberg School of Public Health, Johns Hopkins University, and Adjunct Professor, School of Social Work, University of Southern California. Dr. Manderscheid serves on the boards of the Cosmos Club, the Employee Assistance Research Foundation, the Danya Institute, the FrameWorks Institute, the Council on Quality and Leadership, and the NASMHPD Research Institute. He also serves as the Co-Chair of the Coalition for Whole Health. Previously, he served as the Director of Mental Health and Substance Use Programs at the Global Health Sector of SRA International and in several federal leadership roles in the U.S. Department of Health and Human Services. Throughout his career, he has emphasized and promoted peer and family concerns.

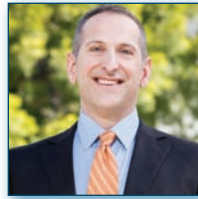
Dr. Manderscheid is a former Member of the Secretary of Health and Human Services Advisory Committee on Healthy People 2020, Past President of the Federal Executive Institute Alumni Association (FEIAA) Foundation, Past President of FEIAA, past Chair of the American Public Health Association (APHA) Mental Health Section and a past member of the APHA Governing Council. He has also served previously as the Chairperson of the Sociological Practice Section of the American Sociological Association, as President of the Washington Academy of Sciences and the District of Columbia Sociological Society, and as President of ACMHA: The College for Behavioral Health Leadership. Recently, he co-edited a new text, Outcome Measurement in the Human Services: Cross-Cutting Issues and Methods in the Era of Health Reform, and contributed to a second new text, Public Mental Health. Previously, he served as principal editor for eight editions of Mental Health, United States. He has also authored numerous scientific and professional publications on services to persons with mental illness and substance use conditions. He serves on the Editorial Board and prepares a periodic blog for Behavioral Healthcare.



**Frank Mecca, Executive Director**

County Welfare Directors Association of California (CWDA)

Frank Mecca has served as Executive Director for 25 years, during which he has helped establish CWDA as a leading advocacy and policy organization in the field of public human services. Under Frank's leadership, the association has been instrumental in the development of significant human services programs and policies, including helping shape the CalWORKs program, creating the Adult Protective Services program, and advocating for significant child welfare reform efforts such as extending foster care support to youth after age 18.



Frank is a board member of the California Budget & Policy Center and a member of the California Child Welfare Council. He is a former president of the National Association of County Human Services Administrators. Prior to joining CWDA, Frank served as a fiscal and policy analyst for the California Legislative Analyst's Office, where he had oversight responsibility for most child welfare programs, including Child Welfare Services, Foster Care and Adoptions. He holds a master's degree in Public Affairs with a concentration in social welfare policy from the Lyndon B. Johnson School of Public Affairs at the University of Texas, Austin. He earned his undergraduate degree in Government and Economics from Franklin and Marshall College in Lancaster, Pennsylvania.

**Dennis Mohatt, Vice President for Behavioral Health**

Western Interstate Commission for Higher Education (WICHE)

Dennis Mohatt is the Vice President for Behavioral Health at the Western Interstate Commission for Higher Education (WICHE). He directs the WICHE Mental Health Program and the WICHE Center for Rural Mental Health Research. Dennis has over 30 years of public mental health services. His work has included direct clinical care, clinical supervision, and CEO tenure in a rural CMHC serving Michigan's Upper Peninsula. Additionally, he led an effort in the early 1990s, funded by HRSA, to successfully integrate mental health and primary care in multiple rural family practice settings. During the late 1990s, Dennis served as the Deputy Director for the Nebraska Department of Health and Human Services, a position where he also served as the state's commissioner of mental health. His duties included executive management of multiple state HHS divisions including: child welfare, juvenile justice, public health, mental health, developmental disabilities, substance use, services for the older adults, public assistance, Medicaid, services for the visually impaired, and public institutions. Since 2001, Dennis has led WICHE's efforts in behavioral health. He has served as a member of the National Rural Health Advisory Committee, and led many national efforts relating to rural mental health including his role as the Chief Consultant to the President's New Freedom Commission on Mental Health. He is actively engaged in efforts focused on improving services to Veterans, Guard, and Reserve as well as their families; rural mental health policy; workforce development, and increasing adoption of integrated approaches to behavioral and primary care practice. His graduate training was supported by a NIMH Fellowship and focused on rural community-clinical psychology.



**Alan Morgan, MPA, Chief Executive Officer**

National Rural Health Association

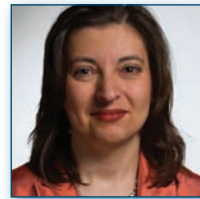
Alan Morgan joined NRHA staff in 2001. He has more than 20 years of experience in health policy development at the state and federal level. He previously worked for U.S. Congressman Dick Nichols and former Kansas Gov. Mike Hayden. Alan's experience also includes tenures with the American Society of Clinical Pathologists and the Heart Rhythm Society, where he established a D.C.-based government affairs office. Prior to joining NRHA, he served as a federal lobbyist for VHA Inc. Alan's health policy articles have been published in The Journal of Rural Health, The Journal of Cardiovascular Management, The Journal of Pacing and Clinical Electrophysiology, Cardiac Electrophysiology Review and Laboratory Medicine. He also served as a co-author for the 6th edition of "Policy and Politics in Nursing and Health Care." He earned a bachelor's

degree in journalism from the University of Kansas and a master's degree in public administration from George Mason University. In 2011, he was selected by readers of Modern Healthcare as one of the top 100 most influential people in health care.

**MaryBeth Musumeci, JD, Associate Director**

Kaiser Family Foundation

MaryBeth Musumeci is an Associate Director at the Kaiser Family Foundation's Commission on Medicaid and the Uninsured in Washington, DC. Her work concentrates on Medicaid for people with disabilities, including issues related to people dually eligible for Medicare and Medicaid, community integration, and long-term services and supports. Prior to joining the Commission staff, she held a Reuschlein Clinical Teaching Fellowship at Villanova University School of Law and spent eight years as a civil legal aid lawyer, most recently as the Deputy Legal Advocacy Director of the Disabilities Law Program at Community Legal Aid Society, Inc. in Wilmington, Delaware, where her practice focused on Medicaid, Supplemental Security Income, other public benefits programs, and civil rights and accessibility issues. Previously, she developed and taught a seminar in Public Benefits Law at Widener University School of Law, clerked in the Delaware Family Court, and held an Independence Foundation Public Interest Law Fellowship representing women transitioning from welfare to work in Chester, Pennsylvania. She received her B.A. with highest honors from Douglass College, Rutgers University and her J.D. from Harvard Law School.



**Sandra Naylor Goodwin, PhD, MSW, President and CEO**

California Institute for Behavioral Health Solutions (CIBHS)

Sandra Naylor Goodwin is the founding President and CEO of CIBHS, and has 30 years of professional experience in the behavioral health field. This experience includes administration, treatment, service methodologies, planning and policy development at the county and state levels. Dr. Goodwin is currently developing strategies for implementation of healthcare reform as it applies to behavioral health. This body of work includes focus on the bi-directional integration of mental health, substance use and primary healthcare. Over the last several years CIBHS has been responsible for policy development, training and technical assistance to support the Mental Health Services Act (Proposition 63), which California voters passed in November 2004. The MHSA focuses on transformation of mental health services, by concentrating on recovery, resiliency, cultural competency, and reduction of disparities. As principal consultant to the Assembly Health Committee of the California Legislature, Dr. Goodwin was influential in development of several pieces of fiscal and program reform legislation, including mental health realignment, Medi-Cal consolidation, the California Mental Health Master Plan, and California compliance with the ADA. Dr. Goodwin previously was a practicing clinician and director of mental health and alcohol and drug abuse for Placer County. She holds a B.A. degree from California State University, Long Beach; an MSW degree from West Virginia University; and a Ph.D. degree in clinical psychology from the Professional School of Psychology.



**Noel J. O'Neill, LMFT, Director**

Trinity County Behavioral Health Services

Noel J. O'Neill, LMFT has been the Agency Director for Trinity County Behavioral Health Services since 2008. Prior to Trinity County he worked in various management and direct provider positions for Mendocino County for 23 years. Noel Co-Chaired the Small Counties Committee for the County Behavioral Health Directors Association (CBHDA) and served on its Executive Team for six years. He is currently serving a second term as a member of the California



Mental Health Planning Council. He has been a nine-year commissioner on both the Trinity County First Five and the Mendocino County Juvenile Justice Commissions.

**Dan Peck, Director**

Third Sector Capital Partners

As a Director in Third Sector's San Francisco office, Dan leads advisory services engagements with governments seeking to use outcomes-oriented contracting to measurably improve outcomes in homelessness, mental health, and recidivism in their communities. Dan has supported governments to develop over \$50M in outcomes-oriented contracts in communities including Los Angeles County, Santa Clara County, Lane County Oregon, Montgomery and Prince George's County Maryland and Connecticut state. A renewed focus on outcomes has supported these communities to scale interventions including permanent supportive housing, assertive community treatment, and cognitive behavioral therapy through Dan's work.



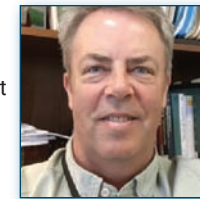
Dan previously worked in London at the management consultancy A.T. Kearney Ltd. where he advised multinational and European clients on a range of strategic, regulatory and operational issues. Dan's client work incorporated project design, management and implementation components as part of A.T. Kearney's focus on end-to-end client problem solving. Prior to A.T. Kearney, Dan was an investment banker at Lazard in New York within their Corporate Finance Advisory Group. Dan's work at Lazard saw him advising multinational clients on their capitalization and acquisition financing strategies. During the height of the 2008 Financial Crisis, Dan was tasked with structuring and modeling the multi-billion dollar private investment securities that were employed to recapitalize such financial institutions as Morgan Stanley and Citigroup. This work saw Dan constructing legal term sheets and participating in negotiating sessions with senior banking officials.

Dan graduated magna cum laude from Vanderbilt University with a B.A. in Economics and History, and holds an MBA from the Yale School of Management with a primary focus on Strategy and Social Enterprise.

**Jeffrey Rowe, MD, Supervising Psychiatrist, Juvenile Forensic Services**

County of San Diego Behavioral Health Services

Jeffrey Rowe, MD is the Supervising Psychiatrist for the Juvenile Forensics Division of the County of San Diego Behavioral Health Services. He has served the County in various capacities over the past 20 years including as a clinical supervisor, special evaluator for the Juvenile Court, administrator, and clinical consultant. In addition, Dr. Rowe is a Clinical Associate Professor in Psychiatry for the UCSD School of Medicine.



Dr. Rowe is a board-certified Child and Adolescent Psychiatrist and a Distinguished Fellow of the American Academy of Child and Adolescent Psychiatry. He has experience and expertise in the areas of delinquency, psychological trauma, and early childhood mental health. He presents to audiences, both academic and general, on various topics, and leads annual conferences on Early Childhood Mental Health and Critical Issues in Child and Adolescent Mental Health.

**Simonne Ruff, Director**

Corporation for Supportive Housing

Simonne Ruff has diverse experience in the housing, community, and services fields with expertise in organizational development and program evaluation. As the San Diego Program Director, Ms. Ruff is responsible for setting the direction and annual goals for CSH San Diego, and provides training, technical support, and advisement to numerous supportive housing providers and public funding agencies. Prior to her relocation to San Diego, Ms. Ruff worked for seven years at Neighborhood Link/Senior Link, a multi-service agency in Toronto, Canada. In addition, Ms. Ruff was the community lead researcher in a University of Toronto/Ryerson University initiative, investigating the effectiveness of supportive housing.

**Brian R. Sala, PhD, Deputy Director for Evaluation and Program Operations**

Mental Health Services Oversight and Accountability Commission (MHSOAC)

Brian R. Sala, Ph.D., has been Deputy Director for Evaluation and Program Operations at the MHSOAC since 2015. As a member of the Commission's Executive staff, he provides strategic direction and general oversight to both the Research and Evaluation Unit responsible for the Commission's research activities, and the Program Operations Unit, including Plan Review, Innovation, and Prevention and Early Intervention. From 2009-2015, he served as Assistant Director and Acting Director of the California Research Bureau, providing nonpartisan public policy analysis and reference services to the Legislature and Executive Branch leadership. Prior to joining the State, he served on the political science faculties at the University of Illinois and at the University of California at Davis. He holds a Ph.D. in Political Science from the University of California at San Diego.



**Kiran Savage-Sangwan, Health Integration Policy Director**

California Pan-Ethnic Health Network (CPEHN)

Kiran Savage-Sangwan graduated from New York University with a B.A. and a Master of Public Administration. Prior to joining CPEHN, she worked as the Director of Legislation and Advocacy for the National Alliance on Mental Illness (NAMI) California. At NAMI CA, Kiran led policy initiatives to improve access to behavioral health care, and to reduce the stigma and discrimination surrounding mental illness. Kiran has also worked at the American Civil Liberties Union (ACLU) of Northern California and the New York Civil Liberties Union, primarily focused on immigrants' rights.



**Danielle Schlosser, PhD, Lead Clinical Scientist, Mental Health Team**

Verily

Dr. Schlosser currently holds the positions of Assistant Professor in the Department of Psychiatry at the University of California, San Francisco, Director of the Digital Health Core in the Department of Psychiatry, and Director of the NIH-funded Digital Research and Interventions for Volitional Enhancement (DRIVE) lab. The goal of her research program is to design, develop, and investigate neuroscience-informed digital health solutions to improve the lives of people with schizophrenia and depression. She has a broad background in clinical psychology, with specific training in behavioral neuroscience, early detection and intervention of psychosis, and digital health research. Dr. Schlosser's research is focused on translating the latest findings in reward processing and psychological determinants of motivation into new interventions to treat individuals with schizophrenia and depression. Her focus is on targeting domains that transcend diagnostic labels, such as motivational states and enhancing outcomes, such as quality of life. More recently, with funding from NIMH, her research was focused on developing a mobile app called PRIME, which was designed to target the motivational system and thereby enhance the drive to improve one's quality of life and health outcomes. Her lab is testing the feasibility and impact of PRIME in two ongoing clinical trials in schizophrenia and they recently completed a pilot trial in depression. Two of the three trials were conducted entirely remotely, one with individuals with depression and the other with individuals recently diagnosed with schizophrenia.



**George Scolari, Behavioral Health Program Manager**

Community Health Group, Healthy San Diego

George began working in the behavioral health field in 1985. His first job was at a local psychiatric hospital where he enjoyed working with Seriously Mentally Ill clients as a Mental Health Counselor. Within a



few years he moved on to working in the Intake Departments where he performed admitting evaluations along with Information & Referral Services.

In 1993 George was recruited by Community Health Group (CHG) to coordinate their behavioral health services. CHG is a San Diego (local) not for profit Medi-Cal Managed Care Plan which began in 1982. In San Diego the Medi-Cal Managed Care Plans operate under the umbrella called Healthy San Diego (HSD). HSD is a collaborative of the County, local Medi-Cal Managed Care Plans, hospitals, providers, education and advocacy.

In July of 1998 the Department of Health Care Services carved Specialty Mental Health out of Medi-Cal Managed Care. The HSD Behavioral Health Work Group was formed and George has lead this collaborative team since its inception.

His number one priority and passion is the relationship that's been developed over the years between our local Medi-Cal Managed Care Plans and County Behavioral Health Services.

The Affordable Care Act brought limited behavioral health benefits back into the Medi-Cal Managed Care Plans. The collaboration between our local plans and County Behavioral Health Services has ensured our mutual members/clients never knock on the wrong door and always receive the help they need.

#### **Jonathan Sherin, MD, PhD, Mental Health Director**

Los Angeles County, Department of Mental Health

Jonathan Sherin, M.D., Ph.D., is a longtime wellbeing advocate and – as of this past November – the new Director of the Los Angeles County Department of Mental Health (LACDMH). In this role, he oversees the largest public mental health system in the United States with a budget approaching \$2.5 billion and serving over 250,000 residents.

Prior to joining LACDMH, Dr. Sherin was chief medical officer and executive vice president of military communities for Volunteers of America, one of our nation's largest direct service non-profits. Over the years, he has also served in a variety of clinical, academic, teaching, and administrative leadership positions. In his last such post, Dr. Sherin directed mental health for the Miami VA Healthcare System and functioned as vice-chairman of the Department of Psychiatry at the University of Miami.

As an expert on veteran issues, Dr. Sherin has testified to Congress on challenges faced by members of the military community, specifically as they relate to trauma, recovery, reintegration, and the risk of homelessness and suicide. As a researcher, Dr. Sherin has published in the fields of neurobiology and psychiatry – including a seminal article in "Science" magazine that features his work identifying a core sleep circuit in mammals (the "sleep switch"). He also received the prestigious Kempf Award from the American Psychiatric Association for his conceptual model of the psychotic process.

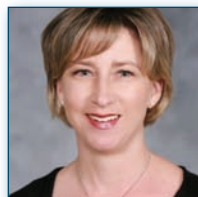
Dr. Sherin is currently a volunteer clinical professor of psychiatry and behavioral sciences at both UCLA and the University of Miami.



#### **Dawn M. Smith, LCSW, Administrative Manager II, Children, Youth, and Prevention**

Behavioral Health Services, County of Orange Health Care Agency

Dawn earned her Master of Social Work degree at California State University, Long Beach and has been a Licensed Clinical Social Worker since 2002. Dawn joined the County of Orange Health Care Agency in 1998 providing direct services in adult outpatient settings and later providing supervisory oversight to adult outpatient clinics. Dawn has worked with the County's adult inpatient programs providing oversight of daily operations and contract monitoring for acute hospital settings, long term care settings such as IMD's, and the State Hospital. Dawn has been in her current role with the county's Prevention and Intervention programs since 2014. In this capacity, Dawn has the privilege to develop and oversee programs that serve children, transitional aged youth, and their families. Notable among these programs are the Orange County Center for Resiliency, Education, and Wellness – OCCREW, a first-onset psychosis program, School Based



Mental Health Services which provides services to middle school students who have experienced trauma, and Connect the Tots, a school readiness program serving children 0-8 years of age.

#### **Suzanne Tavano, BSN, PhD, Behavioral Health and Recovery Services Director**

Marin County Health and Human Services and President of the County Behavioral Health Directors of California (CBHDA)

Suzanne Tavano is a clinical psychologist, a registered nurse and health care expert, is the Director of Behavioral Health and Recovery Services for the County of Marin.

Marin Health and Human Services is continuing to adapt its organizational structure and services to client, family and community needs, research informed best practices and adjust to economic realities. This position, which combines the administration of mental health and substance use, reflects Marin's focus on service integration and leadership excellence.

Dr. Tavano's past positions include consulting on health care reform and the implementation of the Affordable Care Act for the California Mental Health Directors Association in Sacramento.

Dr. Tavano served as Director of Mental Health and Substance Use Services for the County of Santa Cruz between July 2012 and January 2013. Dr. Tavano spent 18 years working with the Contra Costa County Department of Mental Health. She previously worked in detention and hospital psychiatric services and community clinics serving children, adolescents, families and adults.

Dr. Tavano was attracted to the Marin position because of its legacy of strong behavioral health campaigns and the leadership within the Department of Health and Human Services.

Dr. Tavano has a bachelor's degree and RN certificate from Syracuse University, course work as a Clinical Nurse Specialist at Boston University, plus a master's and doctorate in clinical psychology from the California School of Professional Psychology in Berkeley.



#### **Daphne Watson, Executive Director**

Mental Health America in San Diego

Daphne Watson is the Executive Director of Mental Health America San Diego. Ms. Watson came to Mental Health America in January, 2012. She is an experienced professional, leading and developing a vast number of human services programs.

Daphne has been involved in the mental health field for the past 12 years. She has dedicated her career in addressing disparities and needs of communities of color, whom often are underserved.

Daphne has developed child abuse prevention programs, mental health programs, substance abuse programs, community support programs, and developed juvenile justice programs. She has operated programs in San Diego, Santa Barbara, Riverside, San Bernardino, and Baltimore Maryland. She has developed unique programs such as Family Finding, and WINGS (gender specific program for girls), Family Support programs, Breaking down Barriers, Mental Visions Clubhouse, Mental Health First Aid and other mental health services.

Ms. Watson was appointed by the San Diego County Board of Supervisors to the Mental Health Older Adult Counsel, San Diego County Community Action Planning Board, State of California Mental Health Planning Council, and Mental Health America California Executive Committee. She has been a professor at Springfield College-San Diego, teaching counseling and other innovative services. Daphne has trained extensively on cultural inclusion and diversity. Ms. Watson earned her Master's Degree from SDSU, School of Social Work in 1995 and continues to educate and address the needs of the community. Daphne is an advocate, educator, and program developer, and trainer, visionary and compassionate leader.

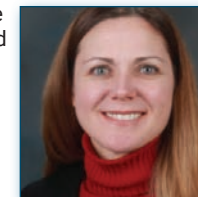


#### **Stephanie Welch, Executive Officer**

Council on Mentally Ill Offenders (COMIO)

Stephanie Welch is the Executive Officer of the Council on Mentally Ill Offenders (COMIO) based in the Office of the Secretary at the California Department of Corrections and Rehabilitation (CDCR). Stephanie also represents CDCR on the newly established Statewide Homeless Coordinating and Financing Council. Prior to state service, Ms. Welch was the Senior Program Manager at the California Mental Health Services Authority (CalMHSA) where she worked on the implementation of statewide programs to prevent suicide, improve student mental health, and reduce mental health stigma and discrimination.

Stephanie has over 17 years of experience in mental health policy, program administration, and advocacy, and holds an MSW from University of Southern California and a BA in Sociology from the University of California, Davis. Her career path includes serving state, county, contractor, and community interests, recognizing outcomes are best met when all parties work together for progress and change. Stephanie has worked as an Associate Director at the California Mental Health Directors Association (CMHDA), a Mental Health Services Act program consultant for Los Angeles County Department of Mental Health, and as an Associate Director for the California Council of Community Mental Health Agencies (CCCMHA) and the Mental Health Association in California. Stephanie also served as a campaign grassroots coordinator for the Yes on Prop 63 campaign.



**CIBHS invites you to use the CIBHS Yapp App at this event.**

Your invitation is in this URL:

<http://my.yapp.us/ULKYY2>

If you do not already have the Yapp on your iPhone or Android mobile device, you'll be directed to your app store to download the Yapp container app.

Once the Yapp is downloaded, open it, tap the "Download an Existing App" button and put this information into the screen:

**ULKYY2**

For those who don't have an iOS or Android mobile device, just enter this link in your computer's browser:

<http://my.yapp.us/ULKYY2>

The app will open in read only mode.



**Let's get social!**  
You can use #BHPF17 and @CBHDA when posting about this event.



Thank you to our sponsors!



KAISER PERMANENTE®



TRILOGY  
Integrated Resources

Network of Care



## CBHDA Program At-A-Glance

<b>WEDNESDAY, SEPTEMBER 6, 2017</b>	
12:00 – 6:00	Early Registration
1:00 – 2:30	Trilogy Network of Care Demonstration
1:00 – 4:50	CBHDA Cultural Competency, Equity and Social Justice Committee (CCESJC)
1:00 – 2:30	Crisis Capacity for Youth
2:40 – 3:40	Crisis Residential: Key Element of an Effective BH Crisis Response Team
2:40 – 3:40	CBHDA Medical Services System of Care Committee (MSSOC)
2:40 – 3:40	CBHDA Substance Abuse Prevention Treatment Committee (SAPT)
3:30 – 5:30	CIBHS Leadership Institute Meet and Greet
6:00 – 10:00	CBHDA Governing Board Awards Dinner

<b>THURSDAY, SEPTEMBER 7, 2017</b>	
7:15 – 4:30	Registration
7:15 – 8:15	Continental Breakfast
8:15 – 8:30	Welcome and Introduction
8:30 – 9:30	Keynote: The Science Behind Behavioral Health
9:30 – 9:40	Networking Break and Screenings
9:40 – 10:40	1A: Nothing About Us Without Us
9:40 – 10:40	1B: Future of the ACA
10:40 – 11:10	Networking Break and Screenings
11:10 – 12:10	2A: Housing Insecurity
11:10 – 12:10	2B: Youth Trauma
12:10 – 1:10	Lunch
1:15 – 2:10	Entertainment and Screenings
2:20 – 3:20	3A: Measuring the Impact of the MHSA
2:20 – 3:20	3B: Strengthening Partnerships to Benefit Children, Youth and Young Adults
3:30 – 3:30	Networking Break and Screenings
3:30 – 4:30	4A: Legislative Strategies for 2018
3:30 – 4:30	4B: Innovation through the MHSA
4:30	Adjourn
4:30 – 6:00	Reception honoring Sandra Naylor Goodwin

<b>FRIDAY, SEPTEMBER 8, 2017</b>	
8:00 – 11:30	Registration
8:00 – 9:00	Continental Breakfast
9:00 – 9:10	Welcome
9:10 – 10:10	Where Rural Health Stands in the Current Washington Healthcare Debates
10:10 – 10:20	Networking Break
10:20 – 11:30	The Affordable Care Act: National Perspective
11:30	Adjourn

The NARMH agenda can be found at [www.narmh.org](http://www.narmh.org).